

**REVIEW OFFICER CERTIFICATION**  
STATE OF NORTH CAROLINA,  
COUNTY OF CABARRUS

I, Jonathan Marshall, REVIEW OFFICER OF CABARRUS COUNTY, CERTIFY THAT THE MAP OR PLAT TO WHICH THIS CERTIFICATION IS AFFIXED MEETS ALL STATUTORY REQUIREMENTS FOR RECORDING.

Signature: Jonathan Marshall DATE: 9/23/11  
REVIEW OFFICER

**LEGEND**

- DB = DEED BOOK
- MB = MAP BOOK
- NAD 83 = NORTH AMERICAN DATUM OF 1983
- NCGS = NORTH CAROLINA GEODETIC SURVEY
- NAVD = NORTH AMERICAN VERTICAL DATUM OF 1988
- NMS = NO MONUMENTATION SET
- PG = PAGE
- R/W = RIGHT-OF-WAY
- SIP = SET #5 REBAR
- SSRW = SANITARY SEWER MANHOLE
- SSRW = SANITARY SEWER RIGHT-OF-WAY
- TOB = TOP OF BANK
- ZONE AE = BASE FLOOD ELEVATIONS DETERMINED
- ZONE X = AREAS OF 0.2% ANNUAL CHANCE FLOOD; AREAS OF 1% ANNUAL CHANCE FLOOD WITH DEPTHS OF LESS THAN 1 FOOT OR WITH DRAINAGE AREAS LESS THAN 1 SQUARE MILE AND AREAS PROTECTED BY LEVEES FROM 1% ANNUAL CHANCE FLOOD
- SCM = SET CONCRETE MONUMENT
- STE = SIGHT TRIANGLE EASEMENT
- PSDE = PRIVATE STORM DRAINAGE EASEMENT
- PDE = PERMANENT STORM DRAINAGE EASEMENT
- RSOD = RIVER STREAM OVERLAY DISTRICT
- SY = SIDE YARD
- RY = REAR YARD
- MBS = MINIMUM BUILDING SETBACK
- COS = COMMON OPEN SPACE
- UE = UTILITY EASEMENT
- (C1) = TOTAL CURVE
- (B3.86) = TOTAL DISTANCE
- SS = SANITARY SEWER
- WLE = WATERLINE EASEMENT
- [Symbol] = FLOODWAY IN ZONE AE
- [Symbol] = 100 YEAR FLOODPLAIN
- [Symbol] = ZONE X
- [Symbol] = PSDE/PDE
- [Symbol] = SSRW
- [Symbol] = BOUNDARY & R/W
- [Symbol] = ADJOINER
- [Symbol] = LOT LINES
- [Symbol] = PSDE
- [Symbol] = SSRW
- XSECT 35 = ESP FLOOD STUDY CROSS-SECTION LINE
- [Symbol] = RSOD BUFFER LINE
- [Symbol] = CLARKE CREEK
- [Symbol] = EDGE OF WATER

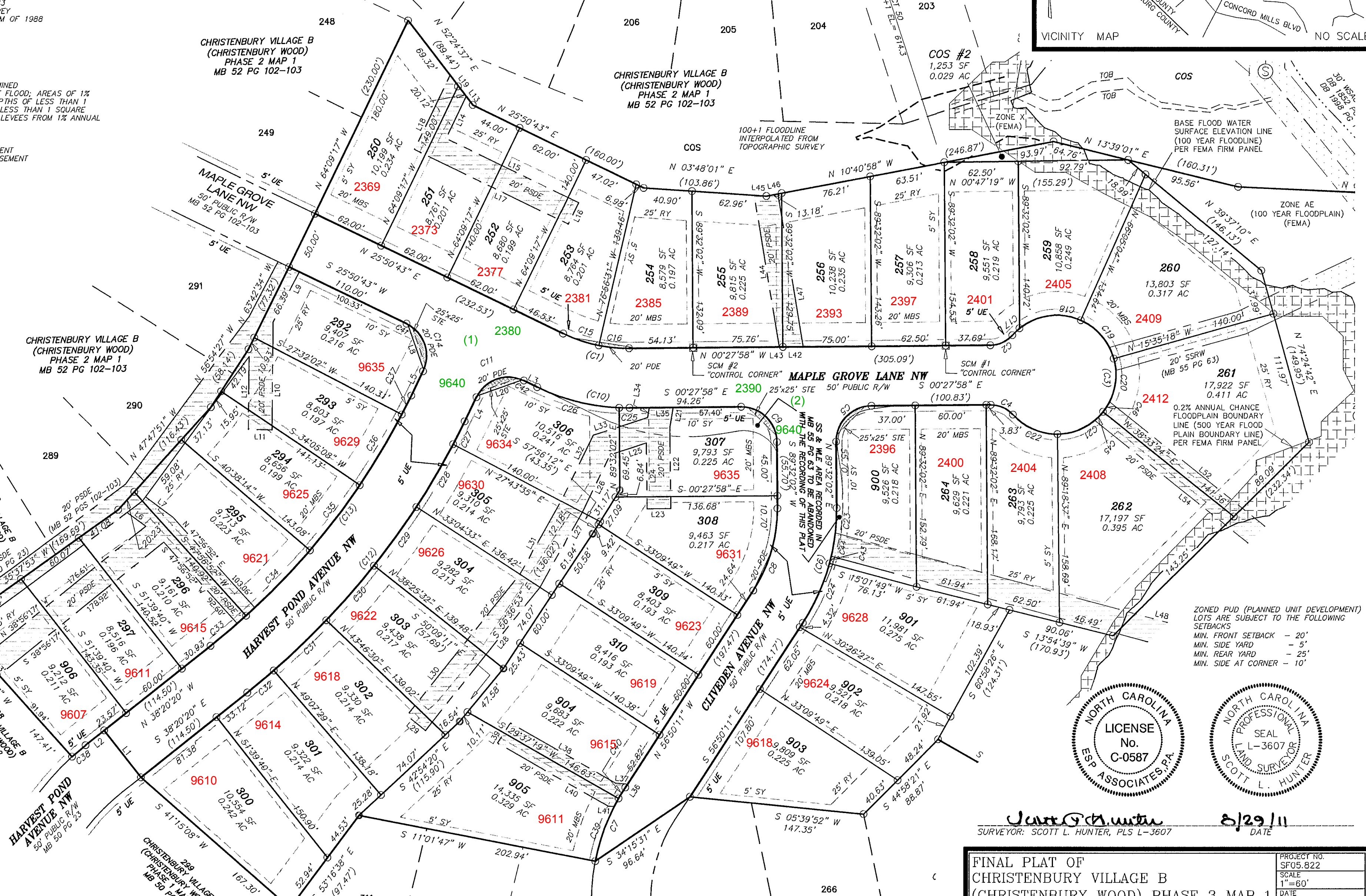
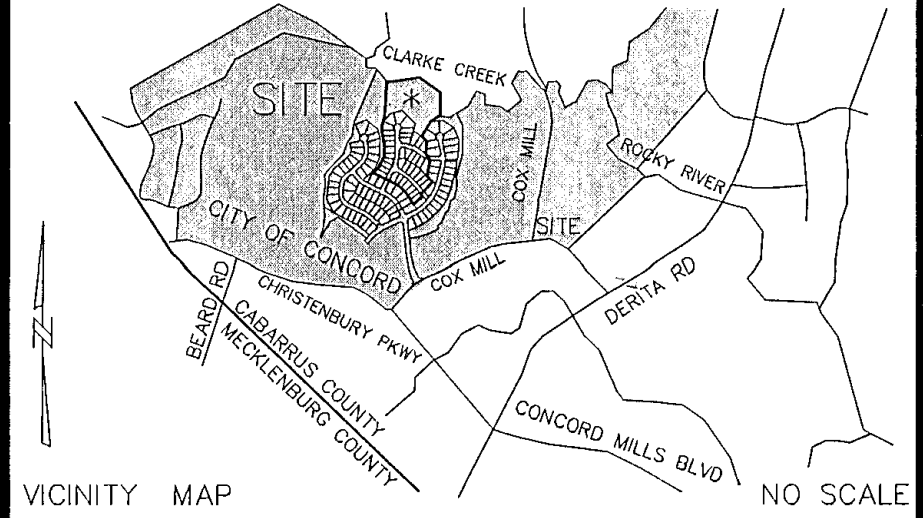
SCM #1 "CONTROL CORNER"  
NC GRID COORDS (NAD83/1995)  
N = 599,562.8464  
E = 1,482,755.3213  
CF = 0.99984770

SCM #2 "CONTROL CORNER"  
NC GRID COORDS (NAD83/1995)  
N = 599,349.6245  
E = 1,482,757.056  
CF = 0.99984770



ESP Associates, P.A.  
4601 Corporate Dr. NW  
Suite 165  
Concord, NC 28027  
phone 704.793.9855  
fax 704.793.9865  
www.espassociates.com

THIS DRAWING AND/OR THE DESIGN SHOWN ARE THE PROPERTY OF ESP ASSOCIATES, P.A. THE REPRODUCTION, ALTERATION, COPYING OR OTHER USE OF THIS DRAWING WITHOUT THEIR WRITTEN CONSENT IS PROHIBITED AND ANY INFRINGEMENT WILL BE SUBJECT TO LEGAL ACTION. ESP ASSOCIATES, P.A.



Signature: Scott L. Hunter DATE: 8/29/11  
SURVEYOR: SCOTT L. HUNTER, PLS L-3607

PROJECT NO. SF05.822	SCALE 1"=60'
DATE 08-29-2011	DRAWN BY SLH
CHECKED BY SLH	DATE SURVEYED AUGUST-2011
DRAWING NO. SF05-VILBPH3M1.DWG	

**CHRISTENBURY LAND INVESTMENTS, LLC**  
1101 WOOD RIDGE CENTER DRIVE, SUITE 155  
CHARLOTTE, NC 28217  
(704) 940-3918

