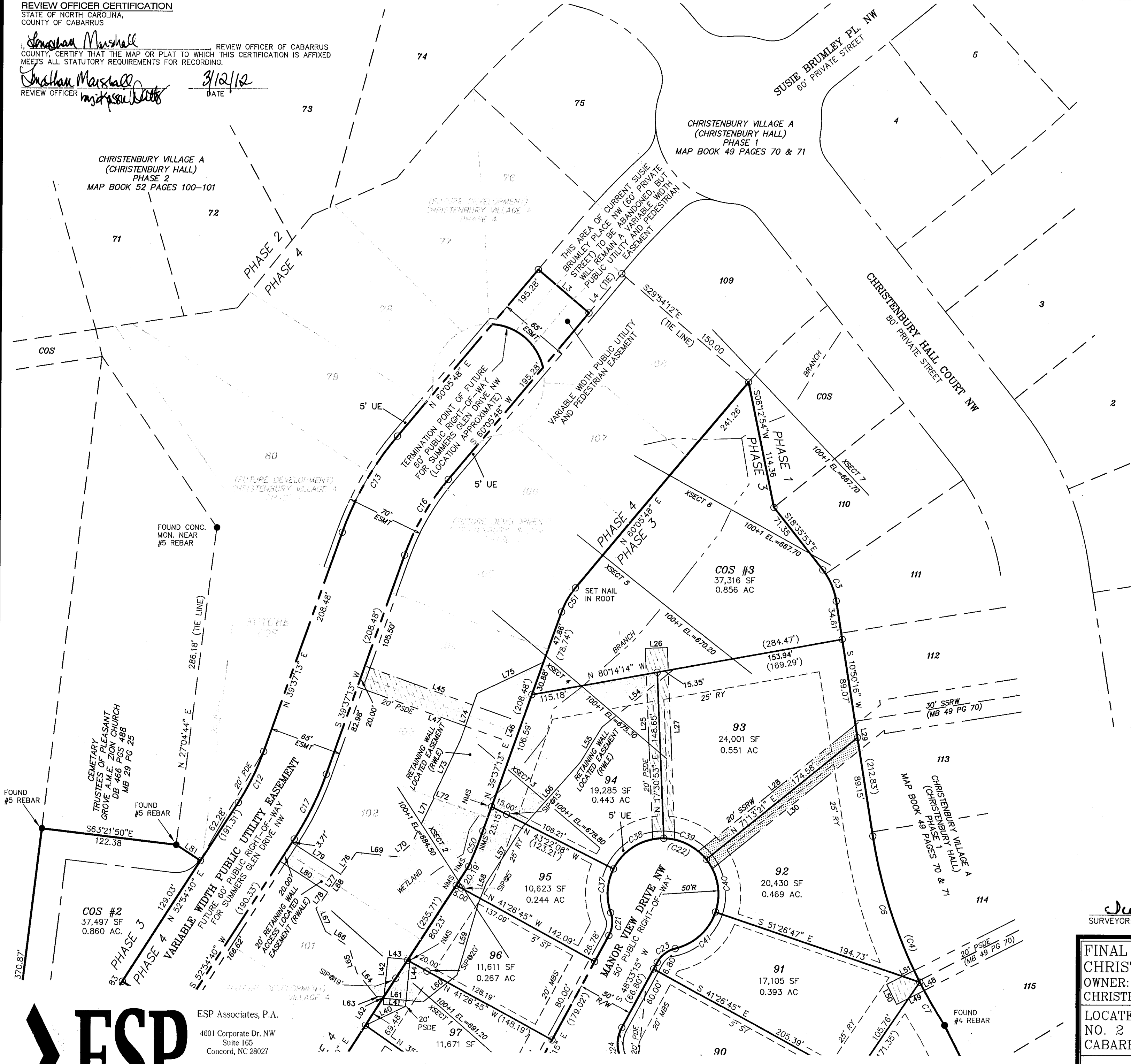
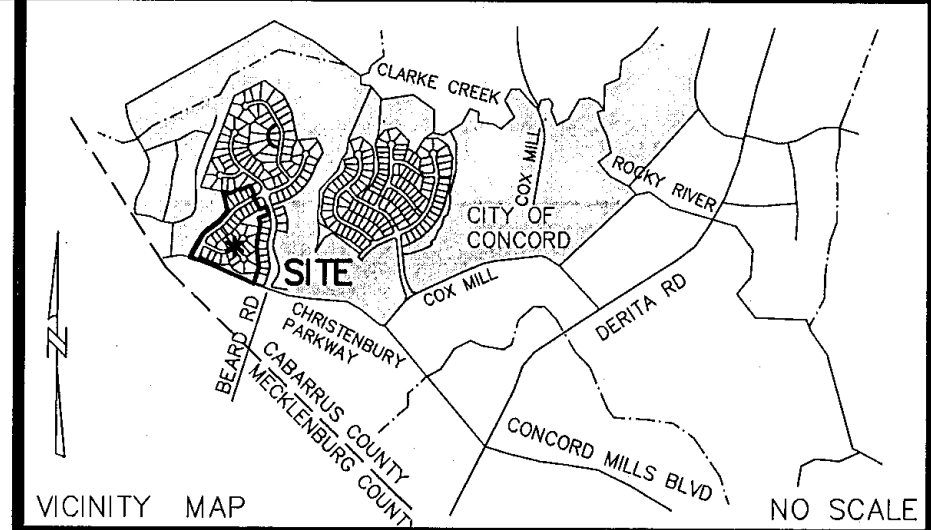
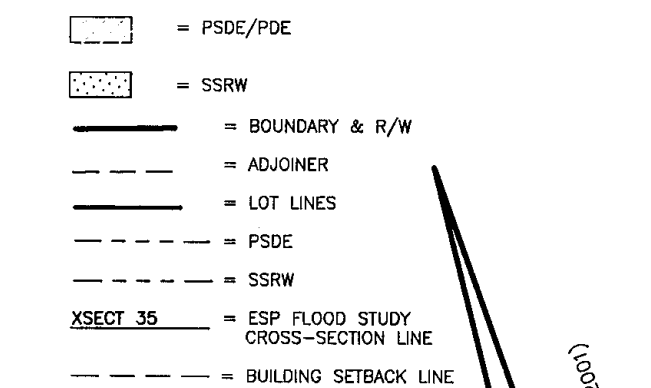


REVIEW OFFICER CERTIFICATION
STATE OF NORTH CAROLINA,
COUNTY OF CABARRUS

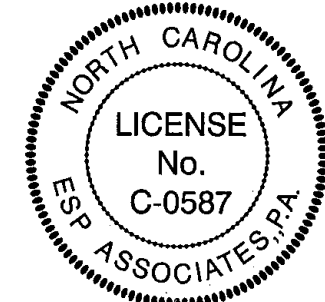
Jonathan Marshall
REVIEW OFFICER OF CABARRUS COUNTY, CERTIFY THAT THE MAP OR PLAT TO WHICH THIS CERTIFICATION IS AFFIXED MEETS ALL STATUTORY REQUIREMENTS FOR RECORDING.
Jonathan Marshall
REVIEW OFFICER
DATE: 3/12/12



- LEGEND**
- DB = DEED BOOK
 - MB = MAP BOOK
 - NAD 83 = NORTH AMERICAN DATUM OF 1983
 - NCGS = NORTH CAROLINA GEODETIC SURVEY
 - NAVD = NORTH AMERICAN VERTICAL DATUM OF 1988
 - PG = PAGE
 - R/W = RIGHT-OF-WAY
 - SIP = SET #5 REBAR
 - (S) = SANITARY SEWER MANHOLE
 - SSRW = SANITARY SEWER RIGHT-OF-WAY
 - SCM = SET CONCRETE MONUMENT
 - SMN = SET "MAG" NAIL
 - NMS = NO MONUMENT SET
 - STE = SIGHT TRIANGLE EASEMENT
 - PSDE = PRIVATE STORM DRAINAGE EASEMENT
 - PDE = PUBLIC DRAINAGE EASEMENT
 - SY = SIDE YARD
 - RY = REAR YARD
 - MBS = MINIMUM BUILDING SETBACK
 - COS = COMMON OPEN SPACE
 - UE = UTILITY EASEMENT
 - (C1) = TOTAL CURVE
 - (83.86') = TOTAL DISTANCE
 - RWALE = RETAINING WALL ACCESS LOCATED EASEMENT
 - RWLE = RETAINING WALL LOCATED EASEMENT



ZONED PUD (PLANNED UNIT DEVELOPMENT) LOTS ARE SUBJECT TO THE FOLLOWING SETBACKS
MIN. FRONT SETBACK - 20'
MIN. SIDE YARD - 5'
MIN. REAR YARD - 25'
MIN. SIDE AT CORNER - 10'

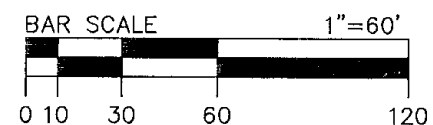


Scott L. Hunter
SURVEYOR: SCOTT L. HUNTER, PLS L-3607
DATE: 02/06/12



ESP Associates, P.A.
4601 Corporate Dr. NW
Suite 165
Concord, NC 28027
phone 704.793.9855
fax 704.793.9865
www.espassociates.com

THIS DRAWING AND/OR THE DESIGN SHOWN ARE THE PROPERTY OF ESP ASSOCIATES, P.A. THE REPRODUCTION, ALTERATION, COPYING OR OTHER USE OF THIS DRAWING WITHOUT THEIR WRITTEN CONSENT IS PROHIBITED AND ANY INFRINGEMENT WILL BE SUBJECT TO LEGAL ACTION. ESP ASSOCIATES, P.A.



<p>FINAL PLAT OF CHRISTENBURY GLEN MAP 1 OWNER: CHRISTENBURY LAND INVESTMENTS, LLC LOCATED IN CITY OF CONCORD NO. 2 TOWNSHIP CABARRUS COUNTY, NORTH CAROLINA</p>		<p>PROJECT NO. SF05.812 SCALE 1"=60' DATE 02-06-2012 DRAWN BY SLH CHECKED BY SLH DATE SURVEYED OCTOBER-2011 DRAWING NO. SF05- VILAPH3MA.DWG</p>
<p>OWNER/CLIENT: CHRISTENBURY LAND INVESTMENTS, LLC 1101 WOOD RIDGE CENTER DRIVE, SUITE 155 CHARLOTTE, NC 28217 (704) 940-3918</p>		<p>SHEET 2 OF 3</p>