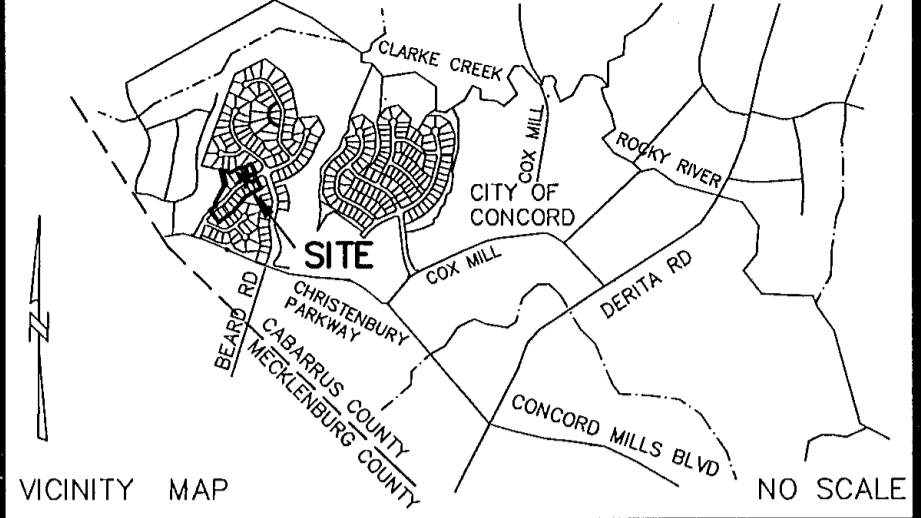


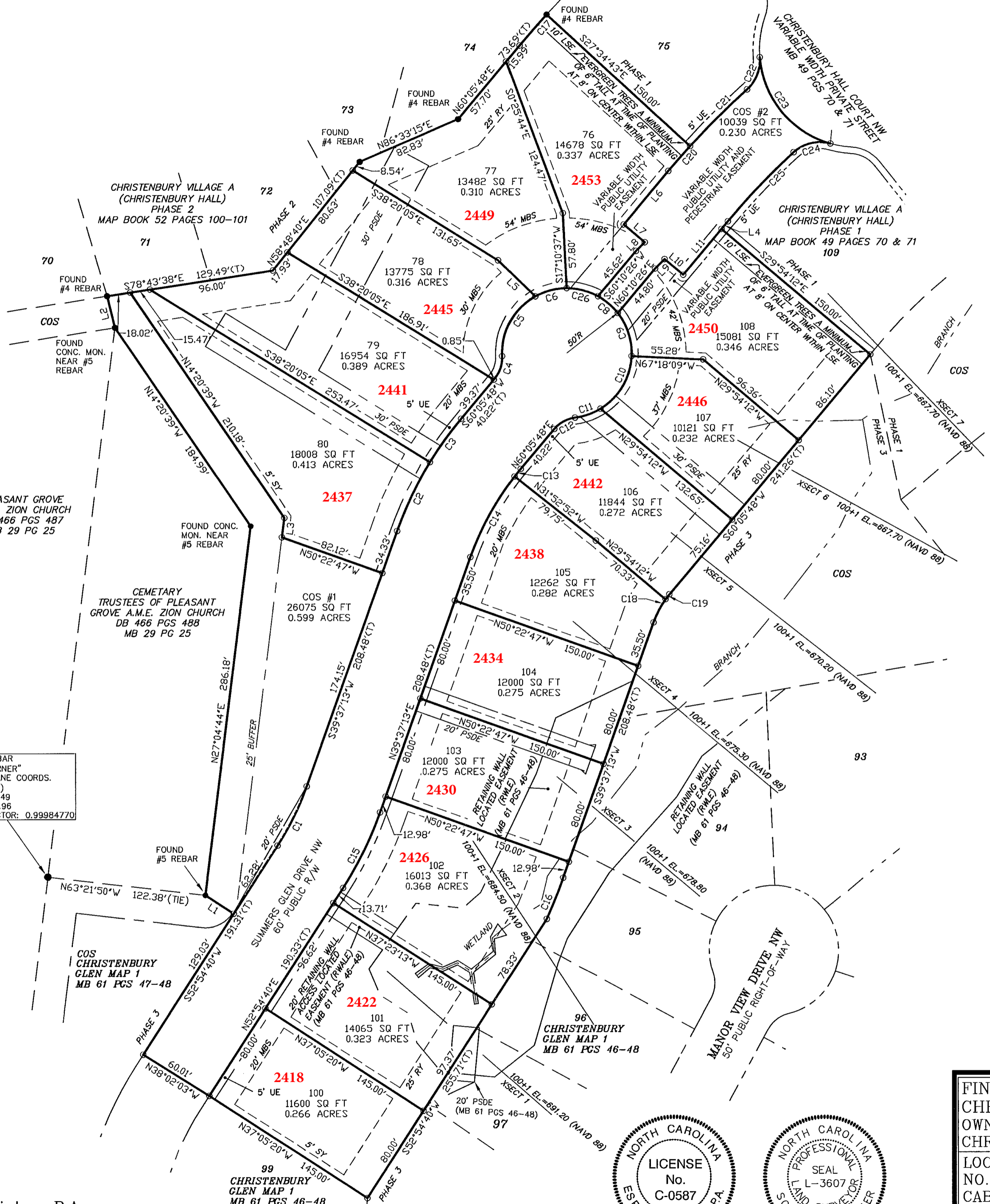
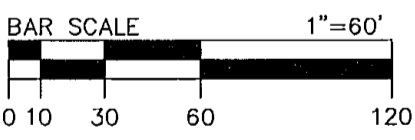
THIS DRAWING AND/OR THE DESIGN SHOWN ARE THE PROPERTY OF ESP ASSOCIATES, P.A. THE REPRODUCTION, ALTERATION, COPYING OR OTHER USE OF THIS DRAWING WITHOUT THEIR WRITTEN CONSENT IS PROHIBITED AND ANY INFRINGEMENT WILL BE SUBJECT TO LEGAL ACTION. ESP ASSOCIATES, P.A.



REVIEW OFFICER CERTIFICATION  
STATE OF NORTH CAROLINA,  
COUNTY OF CABARRUS

I, Greg Bolk, REVIEW OFFICER OF CABARRUS COUNTY, CERTIFY THAT THE MAP OR PLAT TO WHICH THIS CERTIFICATION IS AFFIXED MEETS ALL STATUTORY REQUIREMENTS FOR RECORDING.  
Greg Bolk 3-06-2013  
REVIEW OFFICER By: Shawn Bridges DATE

- LEGEND**
- DB = DEED BOOK
  - MB = MAP BOOK
  - NAD 83 = NORTH AMERICAN DATUM OF 1983
  - NAVD = NORTH AMERICAN VERTICAL DATUM OF 1988
  - PG = PAGE
  - R/W = RIGHT-OF-WAY
  - PSDE = PRIVATE STORM DRAINAGE EASEMENT
  - PDE = PUBLIC DRAINAGE EASEMENT
  - SY = SIDE YARD
  - RY = REAR YARD
  - MBS = MINIMUM BUILDING SETBACK
  - COS = COMMON OPEN SPACE
  - UE = UTILITY EASEMENT
  - 83.86'(T) = TOTAL DISTANCE
  - RWALE = RETAINING WALL ACCESS LOCATED EASEMENT
  - RWLE = RETAINING WALL LOCATED EASEMENT
  - = SET #5 REBAR
  - = FOUND CORNER
  - = PSDE/PDE
  - = BOUNDARY & R/W
  - - - = ADJOINER
  - = LOT LINES
  - - - = PSDE, LSE, UE
  - - - = RW
  - XSECT 35 = ESP FLOOD STUDY CROSS-SECTION LINE
  - - - = BUILDING SETBACK LINE
  - LSE = LANDSCAPE EASEMENT



FOUND #5 REBAR  
"CONTROL CORNER"  
NC STATE PLANE COORDS.  
(NAD 83/2001)  
N. = 598,755.49  
E. = 1,480,632.98  
COMBINED FACTOR: 0.99984770

ZONED PUD (PLANNED UNIT DEVELOPMENT)  
LOTS ARE SUBJECT TO THE FOLLOWING  
SETBACKS  
MIN. FRONT SETBACK - 20'  
MIN. SIDE YARD - 5'  
MIN. REAR YARD - 25'  
MIN. SIDE AT CORNER - 10'



ESP Associates, P.A.  
P.O. Box 7030 3475 Lakemont Blvd.  
Charlotte, NC 28241 Fort Mill, SC 29708  
704-583-4949 (NC)  
803-802-2440 (SC)  
www.espassociates.com



SURVEYOR: Scott L. Hunter, PLS L-3607 DATE: 12-10-12

FINAL PLAT OF CHRISTENBURY GLEN MAP 2		PROJECT NO. SF05.911
OWNER: CHRISTENBURY LAND INVESTMENTS, LLC		SCALE 1"=60'
LOCATED IN CITY OF CONCORD NO. 2 TOWNSHIP CABARRUS COUNTY, NORTH CAROLINA		DATE 12-10-12
OWNER/CLIENT: <b>CHRISTENBURY LAND INVESTMENTS, LLC</b> 1101 WOOD RIDGE CENTER DRIVE, SUITE 155 CHARLOTTE, NC 28217 (704) 940-3918		DRAWN BY CJM
		CHECKED BY SLH
		DATE SURVEYED DEC-2012
		DRAWING NO. SF05-VILAPH4RM-REV.DWG
		SHEET 1 OF 2